

IOT-
BASED_FIRE_AND_THEFT_DE
TECTION_SYSTEM_IN_HOUSI
NG.pdf
by

FILE	IOT-BASED_FIRE_AND_THEFT_DETECTION_SYSTEM_IN_HOUSING.PDF (2.05M)	WORD COUNT	2990
TIME SUBMITTED	25-DEC-2020 06:21PM (UTC+0700)	CHARACTER COUNT	15031
SUBMISSION ID	1481210684		

IOT-BASED FIRE AND THEFT DETECTION SYSTEM IN HOUSING

ANDI EJAH UMRAENI SALAM^{1,*}, RHIZA SAMSOE' OED SADJAD¹
FAIZAL ARYA SAMMAN¹, IDA RACHMANIAR SAHALI¹ AND ZULHARMAN²

¹Department of Electrical Engineering

²Graduate School of Department of Electrical Engineering
Hasanuddin University

Jl. Poros Malino Km. 6, Bontomarannu, Gowa 92171, South Sulawesi, Indonesia

*Corresponding author: ejah@unhas.ac.id; ejahsalam@gmail.com

Received November 2019; accepted February 2020

ABSTRACT. *The Internet of Things (IoT) system has become an object of research that is proliferating lately in various fields of life. Along with that, the concept of smart city is also promoted in many cities in the world. One part of the idea of smart city is the safety of the environment and society. Hence, this research will apply a home security system in the form of early detection of fire and theft in residential areas to create a prosperous and safe city. This research, manages two systems, namely the user side by installing several sensors such as smoke and temperature sensors, which detect fires, and PIR sensor and ultrasonic sensor, to detect theft. On the server-side, there is a Web-based monitoring system that can be used by security officials to monitor security conditions and the user himself when leaving home. Both of these systems communicate with each other with wireless networks. The result indicates that the system can work well. This system is built by integrating several sensors as input, Arduino Uno as data processing, Xbee for sending data to the server, and Ethernet shield for sending data to the Internet. Furthermore, monitoring results will be displayed on the website. Thus, the concept of smart city with the application of IoT for public safety can be applied in a housing to detect fires and theft.*

Keywords: Internet of Things (IoT), Fires, Theft, Sensors, Arduino Uno, Xbee, Ethernet shield, Website

1. **Introduction.** Regarding the development of IoT, research on smart city has been widely carried out, including the application of smart city concepts in a city, along with the rapid development of Internet-based monitoring systems. The smart city is a city area that has integrated information and communication technology in daily governance, with the aim to enhance efficiency, improve public services, and improve the welfare of citizens [1]. Also, research on the integration of information systems services for each domain, such as health, education, transportation, and electricity networks in a city that provides public services to citizens that can be accessed quickly and efficiently [2]. Adequate equipment is necessary to create these conditions, including physical devices, Internet networks, and application systems; therefore, infrastructure operations and public services can be integrated, such as buildings, transportation, electricity and water distribution, and public safety [3]. For public safety, especially in residential areas, many studies are conducted such as fire detection using a combination of sensors that not only detect smoke, but also distinguish different types of smoke to avoid false alarms by using wireless networks [4]. Other research on monitoring and warning of house fires uses Arduino Uno with the Global System Mobile (GSM) network [5]. Other research is also about early fire detection, but uses Zigbee wireless networks as a communication medium [6]. Besides, there is research about the development of fire detection devices that use wireless alarms using intelligent

computer systems [7]. Whereas for research on burglar detection, PIR sensors can be used to detect human movements [8]. Another study is to add UGS (Unattended Ground Sensors) to increase the accuracy of theft detection in a home. The proposed method has the advantage of fast execution time and low memory requirements and potentially suitable for real-time implementation [9]. Other research is on the use of PIR sensors, temperature sensors, and cameras for theft detection [10]. More complex research is applying machine learning for fire detection [11], and image processing to increase the accuracy of detection between humans and animals [12].

Based on some of the literature above, the researcher will try to apply the concept of Smart City in IoT-based housing, which monitors the safety of homes against the danger of fire and theft. In addition, by assembling monitoring tools yourself from a practical point of view, it will certainly be much easier and cheaper. While from an academic perspective, it can increase knowledge and experience in building online monitoring systems. In this case the research is still on a prototype scale and is still devoted to a house, namely by installing several sensors such as temperature and smoke sensors that can detect fires as early as possible. And in terms of preventing theft, especially if the house is empty, before leaving the house, the owner can activate sensors that can detect when there is human movement. By activating two detection systems, the owner and a security officer can monitor the condition of a house, so fire prevention and theft can be handled as early as possible. To implement the wireless sensor network system in a residential, each house in the residential can use this system and send their respective data to the server [13,14]. Therefore, the application of IoT-based Smart City can be carried out, especially in terms of public safety.

2. Methodology.

2.1. General design. In this research, a monitoring system will be applied for early detection of the prevention of fire and theft in a house. Monitoring can carry out at the coordinator/server via the website through IoT networks. Details are shown in Figure 1.

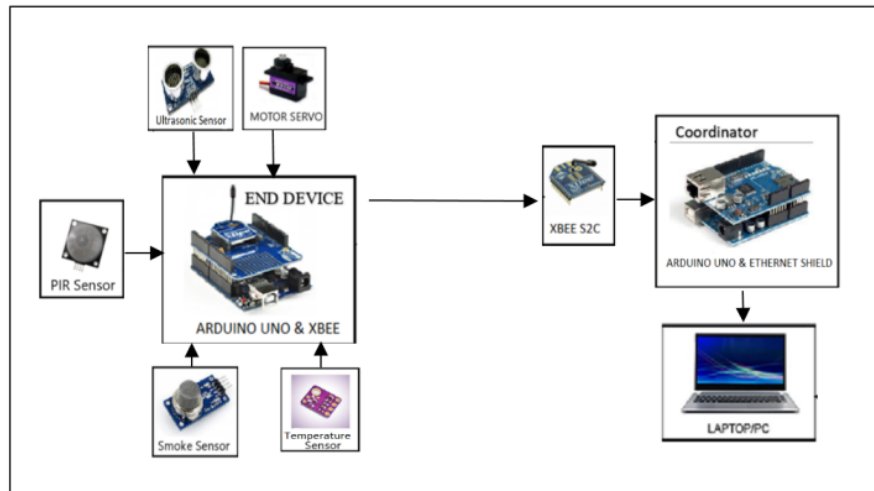


FIGURE 1. Block diagram design

The working principle of this system is using four sensors as input, namely ultrasonic sensor, PIR sensor, temperature sensor, and smoke sensor. The application of each sensor is as follows.

- a) Theft detection; a PIR sensor is used to detect any movement in the house, and an ultrasonic sensor (HCR sensor), which is driven by a radar servo, is used to determine the position of a moving object.
- b) Fire detection used temperature sensor (SHT31 sensor) and smoke sensor (MQ-2 sensor) for detecting temperature and smoke in the room.

Furthermore, the four sensors connect to the Arduino Uno microcontroller controller circuit, which is also connected to the Xbee S2C (end device) as a data sending module to the coordinator/server. Furthermore, the coordinator/server displays data on a PC or Laptop monitor. Monitoring is designed by a website-based interface. The design of a Web-based fire and theft monitoring system consists of hardware design, which includes designing input/output circuits and microcontroller circuits. Besides that, a software design is also implemented in the microcontroller and interface design to display monitoring results on the website.

2.2. Hardware design. This system is divided into two parts which are sender/end device and receiver/coordinator, as follows.

2.2.1. Sender/end device circuit. This hardware design covers the design of input and output circuits. The input circuit includes the HCR sensor, the PIR sensor, the MQ-2 sensor, the SHT31 sensor connected to the microcontroller, and the output circuit, the Xbee module for sending data. In order to work more optimally and be able to reach a larger coverage area, the ultrasonic sensor is paired with a moving servo motor like a radar with a motion detection range up to 180°.

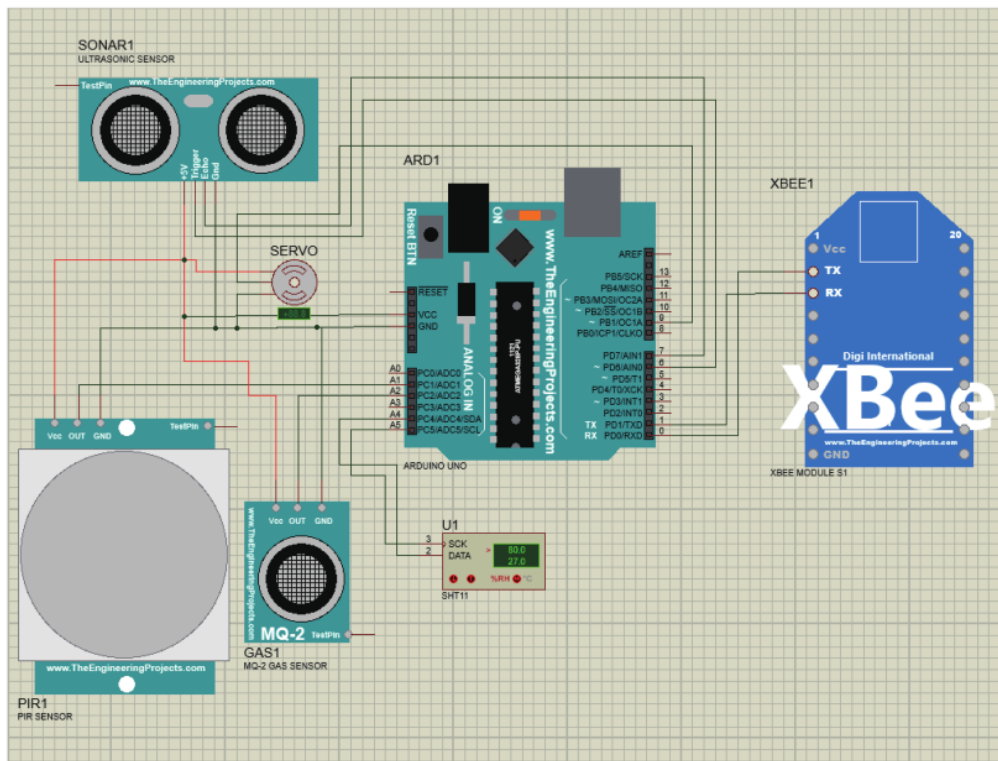


FIGURE 2. System schematic circuit of end device

2.2.2. *Receiver/coordinator circuit.* The coordinator module circuit uses an Arduino and Xbee with the addition of an Ethernet shield (ENC28J60) to send data to the Internet. For connecting with Arduino, the RX and TX pins on Xbee are connected with pin0 and pin1 on Arduino, as shown in Figure 3.

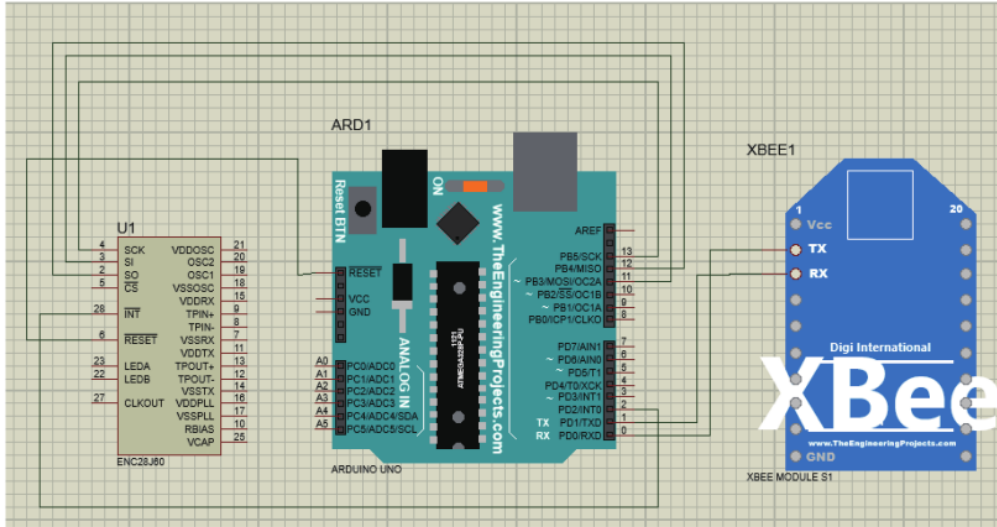


FIGURE 3. System schematic circuit of coordinator/server

2.3. **Software design.** The flowchart of the software design of this research is shown in Figure 4.

The program starts by initializing the PIN on the device module; then, the tool will read data on the sensor, and then it will be sent via the Xbee module. If the receiving module does not receive data, the process is repeated until the data is sent to the receiving module. Therefore, the data will be processed by the receiving module. After the data is processed in the receiver module, the data will be displayed on the website. Software design divides into the design of the sender/end device and the receiver/coordinator and website design interface.

2.3.1. *Software design on end device and coordinator.* This program is designed as a data input module consisting of data received from sensors processed by Arduino Uno. The program created, stored with the extension [* .ino] due to the Arduino Uno, is part of the Arduino microcontroller, which has its compiler called the Arduino IDE. This file is then compiled and then uploaded to the microcontroller using a USB cable so that the microcontroller can work as a system controller regarding the desired performance. In designing this module, the data on the microcontroller is displayed in the form of a serial monitor, which will be sent to the coordinator module to be processed. In this program design, XbeeAddress addr64 on the Arduino program is the serial data output from Arduino that will be sent using the Xbee S2C radio module. Design of the end device module on Arduino Uno using the Arduino IDE can be seen in Figure 5. In designing the program in the coordinator, the IP address is determined to connect to the Internet and ZBRxResponse, which means that the data received is from the Xbee end device. The design of the coordinator module on Arduino Uno using the Arduino IDE can be seen in Figure 6.

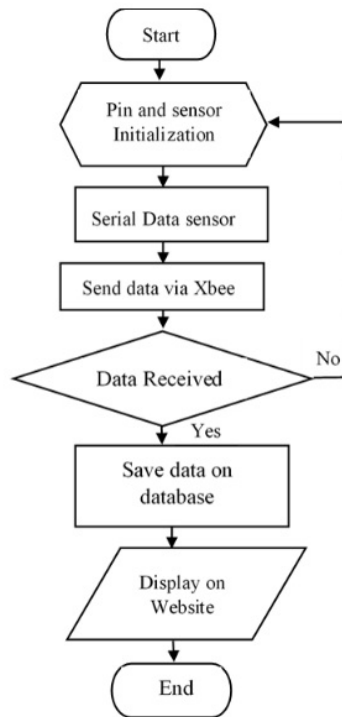


FIGURE 4. Software system flowchart

```

    End_Device | Arduino 1.8.9
    File Edit Sketch Tools Help
    End_Device
    5 #include "Adafruit_SHT31.h"
    6 #include <Servo.h>
    7
    8 UltraSonicDistanceSensor distance(7, 6);
    9 Adafruit_SHT31 sht31 = Adafruit_SHT31();
    10 Servo serv;
    11 XBee xbee = XBee();
    12
    13 uint8_t payload[9] = { 0, 0, 0, 0, 0, 0, 0, 0, 0 };
    14 unsigned long timer = 0;
    15 unsigned long last_timer = 0, last_motor = 0;
    16
    17 bool pir = 0;
    18 int smoke = 0;
    19 bool flag = 0;
    20 int state = 0;
    21 int temp = 0;
    22 int cm_dis = 0;
    23
    24 XBeeAddress64 addr64 = XBeeAddress64(0x0013A200, 0x418D276F);
    25 ZBTxRequest zbTx = ZBTxRequest(addr64, payload, sizeof(payload));
    26
    27 void setup() {
    28
    29
    30
    31
    32
    33
    34
    35
    36
    37
    38
    39
    40
    41
    42
    43
    44
    45
    46
    47
    48
    49
    50
    51
    52
    53
    54
    55
    56
    57
    58
    59
    60
    61
    62
    63
    64
    65
    66
    67
    68
    69
    70
    71
    72
    73
    74
    75
    76
    77
    78
    79
    80
    81
    82
    83
    84
    85
    86
    87
    88
    89
    90
    91
    92
    93
    94
    95
    96
    97
    98
    99
    100
    101
    102
    103
    104
    105
    106
    107
    108
    109
    110
    111
    112
    113
    114
    115
    116
    117
    118
    119
    120
    121
    122
    123
    124
    125
    126
    127
    128
    129
    130
    131
    132
    133
    134
    135
    136
    137
    138
    139
    140
    141
    142
    143
    144
    145
    146
    147
    148
    149
    150
    151
    152
    153
    154
    155
    156
    157
    158
    159
    160
    161
    162
    163
    164
    165
    166
    167
    168
    169
    170
    171
    172
    173
    174
    175
    176
    177
    178
    179
    180
    181
    182
    183
    184
    185
    186
    187
    188
    189
    190
    191
    192
    193
    194
    195
    196
    197
    198
    199
    200
    201
    202
    203
    204
    205
    206
    207
    208
    209
    210
    211
    212
    213
    214
    215
    216
    217
    218
    219
    220
    221
    222
    223
    224
    225
    226
    227
    228
    229
    230
    231
    232
    233
    234
    235
    236
    237
    238
    239
    240
    241
    242
    243
    244
    245
    246
    247
    248
    249
    250
    251
    252
    253
    254
    255
    256
    257
    258
    259
    260
    261
    262
    263
    264
    265
    266
    267
    268
    269
    270
    271
    272
    273
    274
    275
    276
    277
    278
    279
    280
    281
    282
    283
    284
    285
    286
    287
    288
    289
    290
    291
    292
    293
    294
    295
    296
    297
    298
    299
    300
    301
    302
    303
    304
    305
    306
    307
    308
    309
    310
    311
    312
    313
    314
    315
    316
    317
    318
    319
    320
    321
    322
    323
    324
    325
    326
    327
    328
    329
    330
    331
    332
    333
    334
    335
    336
    337
    338
    339
    340
    341
    342
    343
    344
    345
    346
    347
    348
    349
    350
    351
    352
    353
    354
    355
    356
    357
    358
    359
    360
    361
    362
    363
    364
    365
    366
    367
    368
    369
    370
    371
    372
    373
    374
    375
    376
    377
    378
    379
    380
    381
    382
    383
    384
    385
    386
    387
    388
    389
    390
    391
    392
    393
    394
    395
    396
    397
    398
    399
    400
    401
    402
    403
    404
    405
    406
    407
    408
    409
    410
    411
    412
    413
    414
    415
    416
    417
    418
    419
    420
    421
    422
    423
    424
    425
    426
    427
    428
    429
    430
    431
    432
    433
    434
    435
    436
    437
    438
    439
    440
    441
    442
    443
    444
    445
    446
    447
    448
    449
    450
    451
    452
    453
    454
    455
    456
    457
    458
    459
    460
    461
    462
    463
    464
    465
    466
    467
    468
    469
    470
    471
    472
    473
    474
    475
    476
    477
    478
    479
    480
    481
    482
    483
    484
    485
    486
    487
    488
    489
    490
    491
    492
    493
    494
    495
    496
    497
    498
    499
    500
    501
    502
    503
    504
    505
    506
    507
    508
    509
    510
    511
    512
    513
    514
    515
    516
    517
    518
    519
    520
    521
    522
    523
    524
    525
    526
    527
    528
    529
    530
    531
    532
    533
    534
    535
    536
    537
    538
    539
    540
    541
    542
    543
    544
    545
    546
    547
    548
    549
    550
    551
    552
    553
    554
    555
    556
    557
    558
    559
    560
    561
    562
    563
    564
    565
    566
    567
    568
    569
    570
    571
    572
    573
    574
    575
    576
    577
    578
    579
    580
    581
    582
    583
    584
    585
    586
    587
    588
    589
    590
    591
    592
    593
    594
    595
    596
    597
    598
    599
    600
    601
    602
    603
    604
    605
    606
    607
    608
    609
    610
    611
    612
    613
    614
    615
    616
    617
    618
    619
    620
    621
    622
    623
    624
    625
    626
    627
    628
    629
    630
    631
    632
    633
    634
    635
    636
    637
    638
    639
    640
    641
    642
    643
    644
    645
    646
    647
    648
    649
    650
    651
    652
    653
    654
    655
    656
    657
    658
    659
    660
    661
    662
    663
    664
    665
    666
    667
    668
    669
    670
    671
    672
    673
    674
    675
    676
    677
    678
    679
    680
    681
    682
    683
    684
    685
    686
    687
    688
    689
    690
    691
    692
    693
    694
    695
    696
    697
    698
    699
    700
    701
    702
    703
    704
    705
    706
    707
    708
    709
    710
    711
    712
    713
    714
    715
    716
    717
    718
    719
    720
    721
    722
    723
    724
    725
    726
    727
    728
    729
    730
    731
    732
    733
    734
    735
    736
    737
    738
    739
    740
    741
    742
    743
    744
    745
    746
    747
    748
    749
    750
    751
    752
    753
    754
    755
    756
    757
    758
    759
    760
    761
    762
    763
    764
    765
    766
    767
    768
    769
    770
    771
    772
    773
    774
    775
    776
    777
    778
    779
    780
    781
    782
    783
    784
    785
    786
    787
    788
    789
    790
    791
    792
    793
    794
    795
    796
    797
    798
    799
    800
    801
    802
    803
    804
    805
    806
    807
    808
    809
    810
    811
    812
    813
    814
    815
    816
    817
    818
    819
    820
    821
    822
    823
    824
    825
    826
    827
    828
    829
    830
    831
    832
    833
    834
    835
    836
    837
    838
    839
    840
    841
    842
    843
    844
    845
    846
    847
    848
    849
    850
    851
    852
    853
    854
    855
    856
    857
    858
    859
    860
    861
    862
    863
    864
    865
    866
    867
    868
    869
    870
    871
    872
    873
    874
    875
    876
    877
    878
    879
    880
    881
    882
    883
    884
    885
    886
    887
    888
    889
    890
    891
    892
    893
    894
    895
    896
    897
    898
    899
    900
    901
    902
    903
    904
    905
    906
    907
    908
    909
    910
    911
    912
    913
    914
    915
    916
    917
    918
    919
    920
    921
    922
    923
    924
    925
    926
    927
    928
    929
    930
    931
    932
    933
    934
    935
    936
    937
    938
    939
    940
    941
    942
    943
    944
    945
    946
    947
    948
    949
    950
    951
    952
    953
    954
    955
    956
    957
    958
    959
    960
    961
    962
    963
    964
    965
    966
    967
    968
    969
    970
    971
    972
    973
    974
    975
    976
    977
    978
    979
    980
    981
    982
    983
    984
    985
    986
    987
    988
    989
    990
    991
    992
    993
    994
    995
    996
    997
    998
    999
    1000
  
```

FIGURE 5. End device program on Arduino IDE

```

Coordinator | Arduino 1.8.9
File Edit Sketch Tools Help
Coordinator
1 #include <SPI.h>
2 #include <Ethernet.h>
3 #include <XBee.h>
4
5 XBee xbee = XBee();
6 XBeeResponse response = XBeeResponse();
7 ZBeeResponse rx = ZBeeResponse();
8
9 byte mac[] = {0xDE, 0xAD, 0xBE, 0xEF, 0xFE, 0xED};
10
11 IPAddress ip(192, 168, 10, 10);
12 IPAddress gw(192, 168, 10, 1);
13 IPAddress subnet(255, 255, 255, 0);
14
15 EthernetClient client;
16
17 int a, b, c, d, e, f;
18 String id;
19 void setup() {
20   Serial.begin(9600);
21   xbee.begin(Serial);
22
23   Ethernet.begin(mac, ip, gw, subnet);
24   while (Ethernet.hardwareStatus() == EthernetNoHardware) {
25     Ethernet.begin(mac, ip, gw, subnet);
26     delay(300);
27     Serial.print('.');
28   }
29   Serial.print("My IP is : ");
30   Serial.println(Ethernet.localIP());
31 }
32

```

FIGURE 6. Coordinator program on Arduino IDE

2.3.2. *WEB interface design.* This design aims to display the results of detection and data transmission in real time, so that the user and security officers can access the state condition of the house. This design uses the HTML programming language in building website interfaces, which include PHP, CSS, JavaScript, and MySQL script.

3. **Results and Discussion.** To find out the performance of this system, each sensor will be tested, namely the temperature sensor, smoke sensor, PIR sensor, ultrasonic sensor and testing of the overall system.

3.1. **SHT31 temperature sensor and the MQ-2 smoke sensor.** SHT31 sensor testing aims to determine the ability of the sensor in room temperature reading by comparing it with other temperature reading devices. Testing the MQ-2 smoke sensor is done by burning a paper material so that the sensor can detect smoke/CO levels in the room. If CO levels have reached 200 ppm, a fire has been suspected. When the room is full of smoke, the sensor output voltage is a maximum of 5 volts. From Table 1, it can be concluded that the sensor detects the temperature accurately, and the MQ-2 sensor detects the presence of smoke by producing a voltage. The results obtained that the voltage generated is directly proportional to the value of CO level (ppm).

3.2. **PIR sensor and ultrasonic sensor.** PIR sensor testing aims to determine the ability of sensors to detect human movements. The result is obtained by placing the sensor in a place that is usually passed by humans, if there is movement, then the PIR sensor reads 1 as in Figure 7.

Ultrasonic sensor testing aims to determine the ability of sensors to detect the distance from objects-testing by comparing the data obtained by the sensor to the measurement

TABLE 1. Testing data of MQ-2 sensor and SHT31 sensor

No	Thermometer (°C)	Sensor SHT31 (°C)	Value CO (ppm)	Vout sensor (V)
1	40	40	0	0
3	37	37	50	3.0
4	34	34	150	3.4
5	32	32	200	3.6
6	31	31	300	3.8
7	30	30	400	4.0
8	28	28	500	4.2

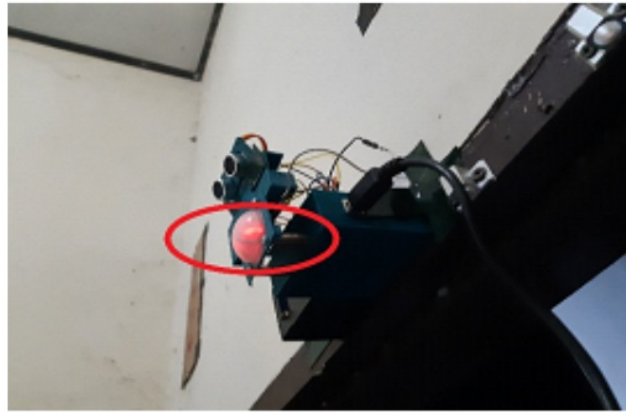


FIGURE 7. PIR sensor testing

TABLE 2. Ultrasonic sensor testing results

No	Ruler (cm)	Sensor (cm)	Percentage error (%)
1	9	10	11
2	14	14	0
3	20	20	0
4	30	30	0
5	40	40	0
6	50	50	0
7	60	60	0
8	70	70	0
9	80	79	1.25
10	100	98	2
11	200	198	1
Mean			1.38

using meter, as shown in Table 2. The sensor reading results are almost the same as the measurement results tracing the meter. With a small error percentage of 1.38%, hence, the sensor is working properly.

3.3. **Overall test.** Overall system testing is done with two scenarios. First, testing by integrating smoke sensors and temperature sensors to detect fires. This test aims to determine the performance of the system in detecting and sending information when a fire occurs. The second test integrates the PIR sensor and ultrasonic sensor, which is driven by using a moving servo motor like a radar to reach a wider area. This test aims to determine

the presence of humans in the room. If the PIR sensor detects a human movement, it will automatically send a notification to the web. Similarly, if the temperature sensor and smoke in the room exceed the threshold of 37°C and 200 ppm, then the notification will automatically be displayed on the Web as shown in Figure 8.

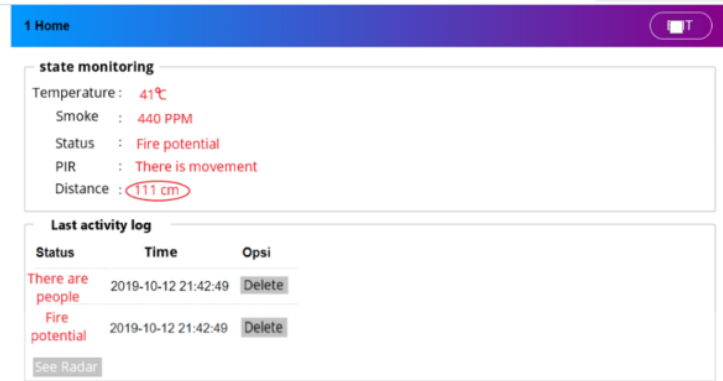


FIGURE 8. Notification of human detection

The test results using the servo radar movement will display the position and angle of the object. The red dot is the position of the distance and angle of an object that is detected or captured by an object, as in Figure 9.

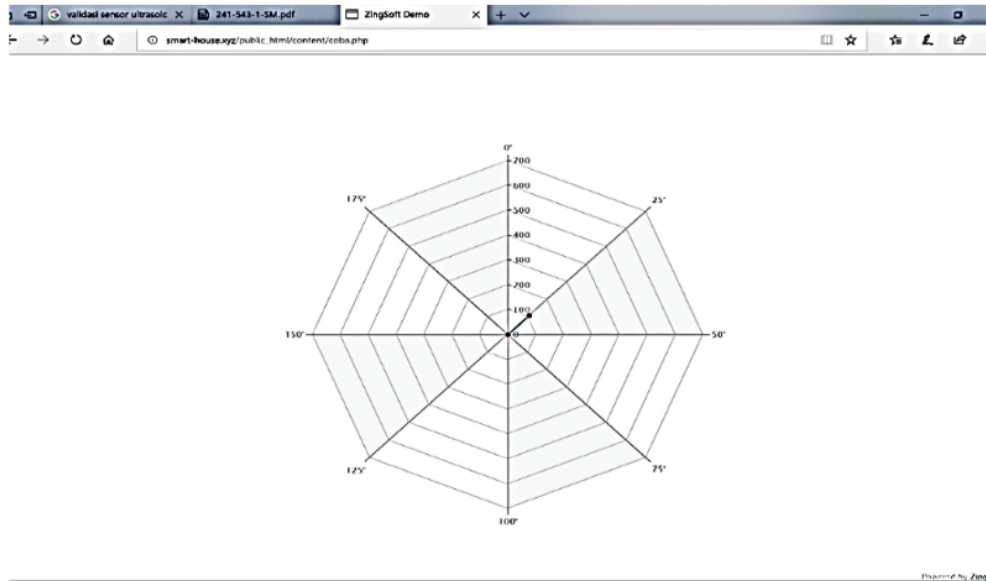


FIGURE 9. Radar detection of object position

To save energy usage, the data transmission and the appearance of notifications on the server only occur if the PIR sensor detects human movement or a temperature sensor and the smoke sensors show a value that exceeds a predetermined threshold.

4. Conclusions. The system built is able to integrate temperature sensors, ultrasonic sensors, smoke sensors, PIR sensors, Arduino Uno, Xbee, and Ethernet shield microcontrollers, so that they can be used to detect fires and theft at home as early as possible.

The fire detection system works by displaying the temperature and smoke content (CO) in ppm. If it exceeds the specified limit, there will be a notification on the website that there will be a potential for fire. For home security detection systems, PIR sensors and ultrasonic sensors will detect human movements and the notification will also be displayed on the website. In the future, fire sensors and artificial intelligence systems will be added, so the detection system that is built will be more accurate and avoid false notifications.

Acknowledgement. This research is funded by Universitas Hasanuddin internal Grant to Penelitian Dasar Unhas (PDU) research in 2019.

REFERENCES

- [1] Center for City solutions and Applied Research, NLC National League of Cities, *Trends in Smart City Development, Case Studies and Recommendations*, 2016.
- [2] N. Z. Bawany and J. A. Shamsi, Smart city architecture: Vision and challenges, *International Journal of Advanced Computer Science and Applications (IJACSA)*, vol.6, no.11, pp.246-255, 2015.
- [3] R. Novotný, R. Kuchta and J. K. Brno, Smart city concept, applications and services, *Journal of Telecommunication System Management*, vol.3, no.2, 2014.
- [4] J. A. Luis, J. A. G. Galán and J. Al. Espigado, Low power wireless smoke alarm system in home fires, *Sensors*, vol.15, no.8, pp.20717-20729, 2015.
- [5] S. Suresh, S. Yuthika and G. A. Vardhini, Home based fire monitoring and warning system, *International Conference on ICT in Business Industry & Government (ICTBIG)*, 2017.
- [6] M. F. M. Fuzi, A. F. Ibrahim, M. H. Ismail and N. S. Ab Halim, HOME FADS: A dedicated fire alert detection system using ZigBee wireless network, *IEEE the 5th Control and System Graduate Research Colloquium*, 2014.
- [7] H. Elbehiery, Developed intelligent fire alarm system, *Journal of American Science*, vol.8, no.8, pp.1016-1024, 2012.
- [8] O. Urfaliglu, E. B. Soyer, B. U. Toreyin and A. E. Cetin, PIR-sensor based human motion event classification, *IEEE the 16th Signal Processing, Communication and Applications Conference*, 2008.
- [9] X. Jin, S. Sarkar, A. Ray, S. Gupta and T. Damarla, Target detection and classification using seismic and PIR sensors, *IEEE Sensors Journal*, vol.12, no.6, pp.1709-1718, 2012.
- [10] P. N. Saramu, G. Abirami, S. Sivakumar, K. M. Ramesh, U. Arul and J. Seetha, Theft detection system using PIR sensor, *The 4th International Conference on Electrical Energy Systems (ICEES)*, 2018.
- [11] M. S. Mahmud, Md. S. Islam and Md. A. Rahman, Smart fire detection system with early notifications using machine learning, *International Journal of Computational Intelligence and Applications*, vol.16, no.2, 2017.
- [12] S. Pandya, H. Ghayvat, K. Kotecha, M. H. Yep and P. Gope, Smart home anti-theft system: A novel approach for near real-time monitoring, smart home security and large video data handling for wellness protocol, *Applied System Innovation*, 2018.
- [13] Y. Zeng, C. J. Sreenan, L. Sitanayah, N. Xiong, I. H. Park and G. Zheng, An emergency-adaptive routing scheme for wireless sensor networks for building fire hazard monitoring, *Sensors*, vol.11, no.3, pp.2899-2919, 2011.
- [14] K. Okokpujie, S. John, E. Noma-Osaghae, I. P. Okokpujie and R. E. Okonigene, A wireless sensor network based fire protection system with SMS alerts, *International Journal of Mechanical Engineering and Technology (IJMET)*, vol.10, no.2, pp.44-52, 2019.

IOT-BASED_FIRE_AND_THEFT_DETECTION_SYSTEM_IN_HOUS.

ORIGINALITY REPORT

% **7**

SIMILARITY INDEX

%

INTERNET SOURCES

% **7**

PUBLICATIONS

%

STUDENT PAPERS

PRIMARY SOURCES

1

P Sihombing, Y M Siregar, J T Tarigan, I Jaya, A Turnip. "Development of building security integration system using sensors, microcontroller and GPS (Global Positioning System) based android smartphone", Journal of Physics: Conference Series, 2018

Publication

% **2**

2

Indrabayu Indrabayu, Rahmat Hardian Putra, Ingrid Nurtanio, Intan Sari Areni, Anugrayani Bustamin. "Blob adaptation through frames analysis for dynamic fire detection", Bulletin of Electrical Engineering and Informatics, 2020

Publication

% **1**

3

Jin, Xin, Soumalya Sarkar, Asok Ray, Shalabh Gupta, and Thyagaraju Damarla. "Target Detection and Classification Using Seismic and PIR Sensors", IEEE Sensors Journal, 2012.

Publication

% **1**

4

Juan Luis, Juan Galán, Javier Espigado. "Low Power Wireless Smoke Alarm System in Home

% **1**

Fires", Sensors, 2015

Publication

5

Natalia Moch, Wioletta Wereda. "Smart Security in the Smart City", Sustainability, 2020

Publication

% 1

6

Wahyu Sardjono, Jajat Sudrajat, Astari Retnowardhani, Mariani. "Readiness Model of e-Learning Implementation from Teacher and Student Side at School in The Pramuka Island of Seribu Islands – DKI Jakarta", 2020 International Conference on Information Management and Technology (ICIMTech), 2020

Publication

% 1

7

Vacip Deniz, Mehmet Çunkaş. "Real time fuzzy logic controlled fire detection system for home applications", International Journal of Intelligent Engineering Informatics, 2019

Publication

<% 1

8

"Intelligent Communication, Control and Devices", Springer Science and Business Media LLC, 2018

Publication

<% 1

9

S Athira, Frangly Francis, Radwin Raphel, N S Sachin, Snophy Porinchu, Seenia Francis. "Smart mirror: A novel framework for interactive display", 2016 International Conference on Circuit, Power and Computing Technologies

<% 1

10

Khalid Abualsaud, Tarek M. Elfouly, Tamer Khattab, Elias Yaacoub, Loay Ismail, Mohamed H. Ahmed, Mohsen Guizani. "A Survey On Mobile Crowd-Sensing And Its Applications In The Iot Era", IEEE Access, 2018

Publication

<% 1

EXCLUDE QUOTES ON

EXCLUDE BIBLIOGRAPHY ON

EXCLUDE MATCHES < 5 WORDS